

Land Use & Land Cover Change Detection and Analysis In Amaravati, A.P Using Google Earth Engine (GEE)

SAMANTHAKURTHI BHAGYA SAI LAKSHMI^{*1}, K. SATYA MAHESH¹,
P. SATYA JEEVAN KUMAR², M.N.V SATYA SRI KUMARI³, Y. SAI⁴,
B. CHANDRA SOMA SHANKAR⁵

^{*1} Assistant professor, Department of civil Engineering, BVC Institute of Technology and Science, Batlapalem

¹ Assistant professor, Department of civil Engineering, BVC Institute of Technology and Science, Batlapalem

² UG Student, Department of civil Engineering, BVC Institute of Technology and Science, Batlapalem

³ UG Student, Department of civil Engineering, BVC Institute of Technology and Science, Batlapalem

⁴ UG Student, Department of civil Engineering, BVC Institute of Technology and Science, Batlapalem

⁵ UG Student, Department of civil Engineering, BVC Institute of Technology and Science, Batlapalem

Abstract

This study aims to create a detailed Land Use/Land Cover (LULC) map of Amaravati, the capital city of Andhra Pradesh, India, using Google Earth Engine (GEE). The research utilizes satellite imagery from Landsat 8, acquired from Google Earth Engine, to classify the LULC patterns in Amaravati Capital city. The classification is performed using a supervised machine learning algorithm, with training data collected from field observations and high resolution satellite imagery. The classified LULC map is then imported into QGIS for further analysis and visualization. The results show that the LULC map accurately captures the spatial distribution of different land use classes, including urban, agricultural, croplands, water bodies and barren lands. The study demonstrates the potential of Google Earth Engine for creating accurate and detailed LULC maps, which can be useful for urban planning, environmental monitoring, and sustainable development in Amaravati Capital city. The agricultural lands and crop land areas have decreased, indicating a shift towards urbanization and development. In this research study, we observed that, the last years from 2014-2024, the data of year on year changes to 125.71% of water bodies are increased, 94.83% of Built-up area is increased, 74.82% of Barren land is increased, 73.45% of crop land is decreased, 29.32% of vegetation is decreased.

Key Words: Google Earth Engine, QGIS, Urban Planning, Environmental Monitoring, Sustainable Development, Land Cover Classification, Geospatial Analysis.

Date of Submission: 08-04-2025

Date of acceptance: 19-04-2025

1. INTRODUCTION

Land use and Land cover (LULC) change detection provides critical insights into the complex interplay between landscape patterns, processes, and environmental sustainability. The meteoric rise of urbanization, agricultural, deforestation, and infrastructure projects, has significantly transformed the urban landscape, leading to socio-economic and ecological transformations. Land Use and Land Cover (LULC) are Key elements in understanding the Earth's surface and application. Land cover represents the physical features found on the Earth's surface, including vegetation, bodies of water, constructed urban areas, and exposed soil. Land use defines human interaction with land, whether for agriculture, urban growth, or conservation efforts. LULC studies play a vital role in tracking environmental transformations, evaluating the effects of human actions, and strategizing for sustainable growth. Through the examination of LULC patterns, researchers can uncover trends like deforestation, urban expansion, or the spread of agricultural land, along with their effects on ecosystems and natural resources. Analyzing LULC patterns helps researchers detect trends like deforestation, urbanization, and agricultural growth, along with their effect on natural environments and essential materials. Such studies frequently utilize satellite imagery and GIS technologies to deliver precise and comprehensive analyses of land changes over time.

Amravati, situated in Andhra Pradesh, India, has been experiencing rapid urbanization and developmental changes. The study area includes various land types such as agricultural fields, urban zones, water bodies, and green spaces. Analyzing LULC patterns in this region is vital for understanding the effects of urban growth and planning sustainable strategies to manage its evolving landscape effectively. Over the years, urban expansion has led to a noticeable reduction in agricultural and vegetative areas, while urban and

wasteland categories have increased. Studies in this region often utilize satellite imagery, such as LANDSAT data, and GIS tools to monitor these changes. This study focuses on analyzing Land Use and Land Cover (LULC) changes in Amaravati over specific time intervals: 2013-2014, 2014-2015, 2017-2018, 2019-2020, 2021-2022, and 2023-2024. Utilizing satellite imagery and GIS tools, the project investigates shifts across five key land categories—water bodies, vegetation, croplands, barren lands, and built-up areas. The findings aim to provide valuable insights into urban growth, environmental transformations, and the impact of human activities in Amaravati.

Remote sensing is a revolutionary technology that gathers information about the Earth's surface without physical contact. By using sensors mounted on satellites, aircraft, or drones, it captures data such as electromagnetic radiation reflected or emitted by land, water, and vegetation. This information enables researchers to analyze land use and land cover patterns, assess changes over time, and develop insights into environmental dynamics. In a Google Earth Engine (GEE)-based project, remote sensing serves as the foundation for processing satellite imagery and conducting detailed spatial analyses, providing a comprehensive view of the evolving landscape.

1.1 Study Area

The study area i.e. Amaravati located on the central region of state of Andhra Pradesh, India and bounded by longitude 80°25"- 80°36" East and latitude 16°22"- 16°37" North and it covers a total area of 18336.09 hectares, there are 16 Mandals in this area and it is located in Guntur district along the southern banks of the Krishna River and it is a rapidly developing place in present times. The city's land use/ land cover pattern includes urban/ built-up areas, water bodies, agricultural lands, barren lands and crop lands. The region has alluvial soil and black cotton soil, suitable for various crops, in this area rice, cotton, chili and peppers are major crops. and also the area is being developed as a smart city, with a focus on sustainable urban plan and green spaces.

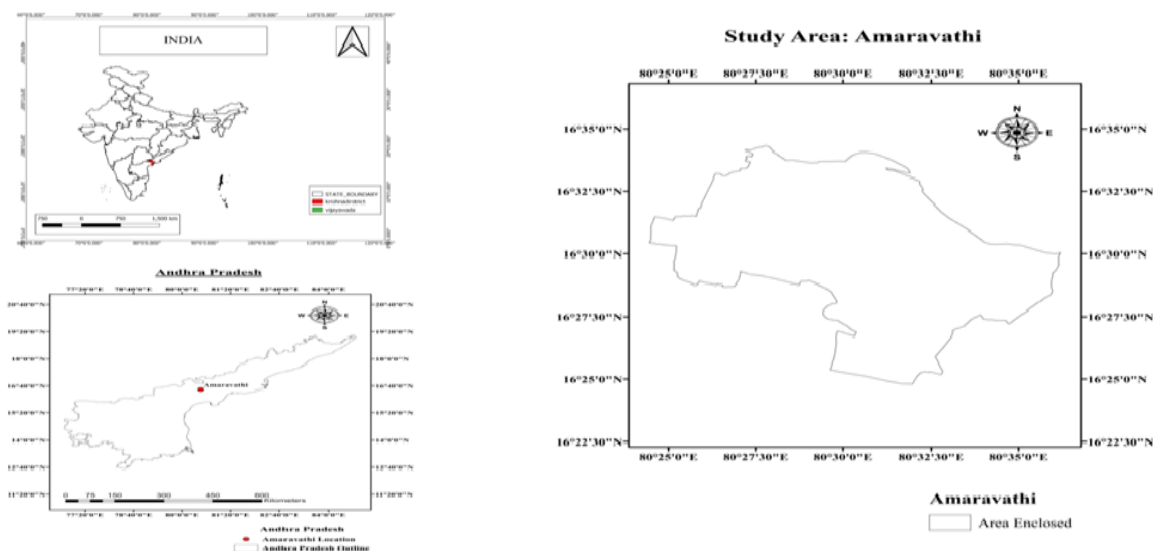


Figure 1: Study area

1.2 Objectives

1. To identify and analyze temporal changes in land use and land cover patterns in Amaravati capital region using satellite imagery.
2. Study temporal patterns in land use and cover to understand the modifications of urbanization and infrastructure development in Amaravati capital region.
3. Offer data-driven recommendations for regional planners and policymakers to balance development with environmental sustainability.
4. Improve the land use information through accessible visualization for the public.

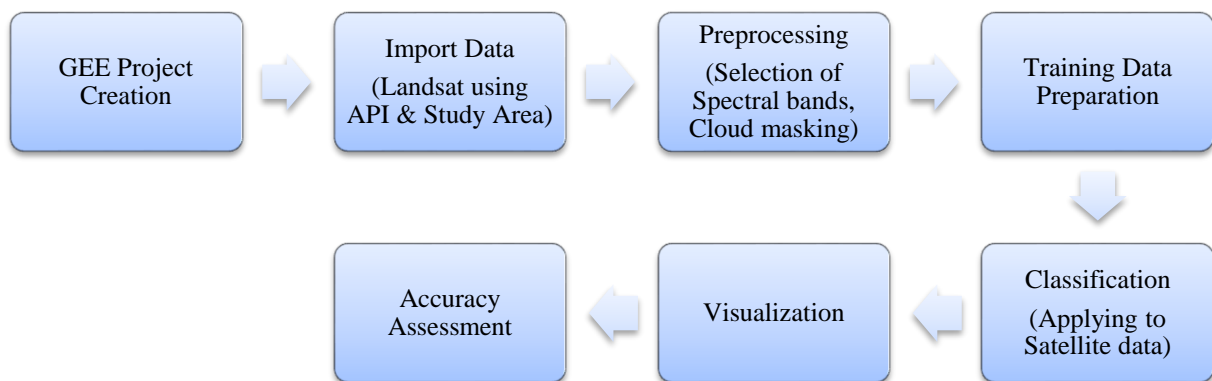
1.3 Scope of the Project

1. This study is limited to the geographic boundaries of the Amaravati capital region located in the state of Andhra Pradesh.

2. Examine satellite imagery to map Amaravati, Andhra Pradesh, focusing on urban areas, agricultural lands, Barren lands, and water bodies.
3. Distinguish and evaluate land use changes over time, such as urban development or loss of vegetation cover, to track Amaravati's growth and environmental conservation efforts.

2. METHODOLOGY

The methodology for this study involves analyzing Land Use and Land Cover (LULC) changes in Amaravati using Google Earth Engine (GEE) with the Random Forest classification method. The process begins with initializing a GEE project and importing Landsat satellite imagery along with boundary data for the study area. Pre-processing steps, such as spectral band selection and cloud masking, are applied to ensure high-quality data. Training datasets for five land categories - water bodies, vegetation, croplands, barren lands, and built-up areas are prepared to train the Random Forest classifier, a robust machine learning algorithm known for its accuracy and efficiency. The classifier is used to categorize the imagery, and the results are visualized to study spatial and temporal changes across different time intervals. To validate the classification, accuracy assessment techniques like Kappa coefficients and error matrices are employed. This methodology provides a reliable framework for understanding land dynamics and environmental changes over time.



Flow chart for LULC process

3. DATA COLLECTION

1. Landsat satellite imagery was acquired from the USGS Earth Explorer platform, which provides free access to remote sensing data.
2. The area of interest (AOI) was selected using coordinates, a shape file, or manually defining a region on the map.
3. The Landsat dataset was filtered based on key parameters such as acquisition date, cloud cover percentage, and sensor type to ensure optimal image selection.
4. The required bands (1 to 6) and the Metadata (MTL) file were chosen, as these are essential for further image processing and analysis.
5. The selected dataset was downloaded in Level-1 Geo TIFF format, which is radiometrically and geometrically corrected for analysis.
6. The downloaded file was in compressed (.zip) format, which was extracted to access the individual spectral bands and metadata for further processing.
7. Imagery was specifically acquired for the following time intervals: 2013-2014, 2014-2015, 2017-2018, 2019-2020, 2021-2022, and 2023-2024 for studying LULC changes in Amaravati.

4. ANALYSIS

1. **Preprocessing:**
 - Apply cloud masking to remove cloud-covered pixels.
 - Normalize spectral bands to improve classification accuracy.
2. **Classification:**
 - Use the Random Forest algorithm in GEE for LULC classification based on training data.
 - Categorize the imagery into five defined land categories.

3. **Temporal Analysis:**
 - Compare classified maps for the chosen years to identify spatial and temporal patterns of land use changes.
4. **Accuracy Assessment:**
 - Evaluate the classification results using Kappa coefficients and confusion matrices to ensure reliability.
5. **Change Detection:**
 - Quantify the transitions between land categories (e.g., croplands to built-up areas) over time.
 - Identify major trends such as urban expansion or reduction in vegetation.
6. **Visualization:**
 - Create maps and graphs in GEE or export the outputs to QGIS for professional layouts.

5. RESULTS

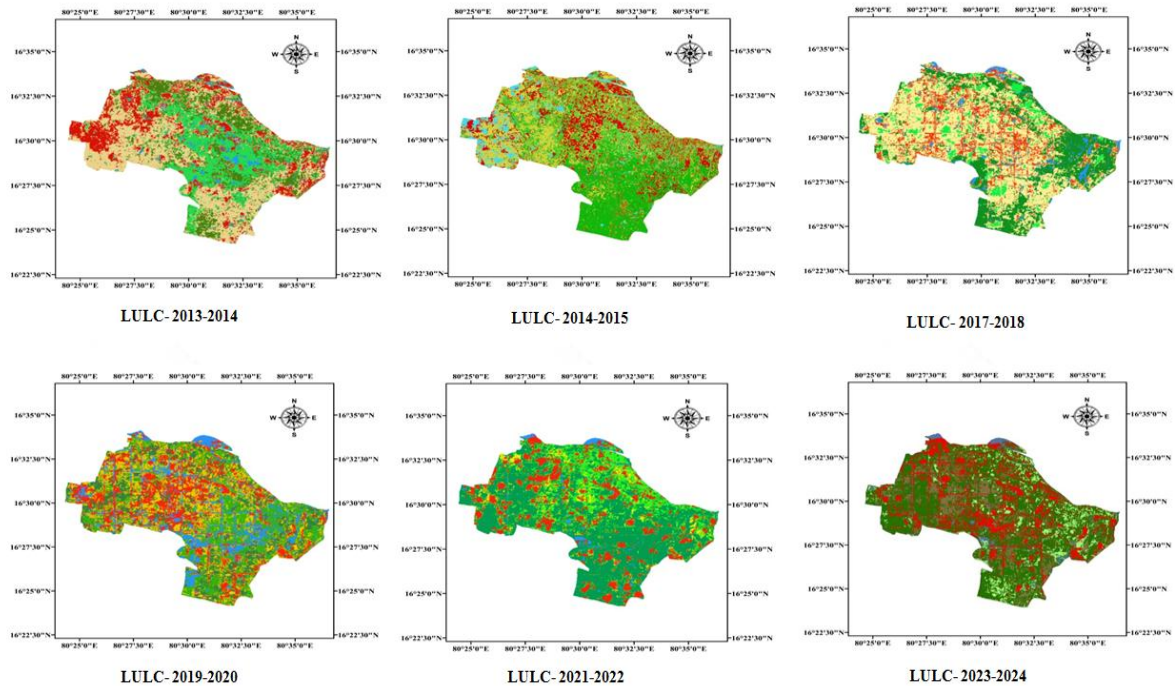
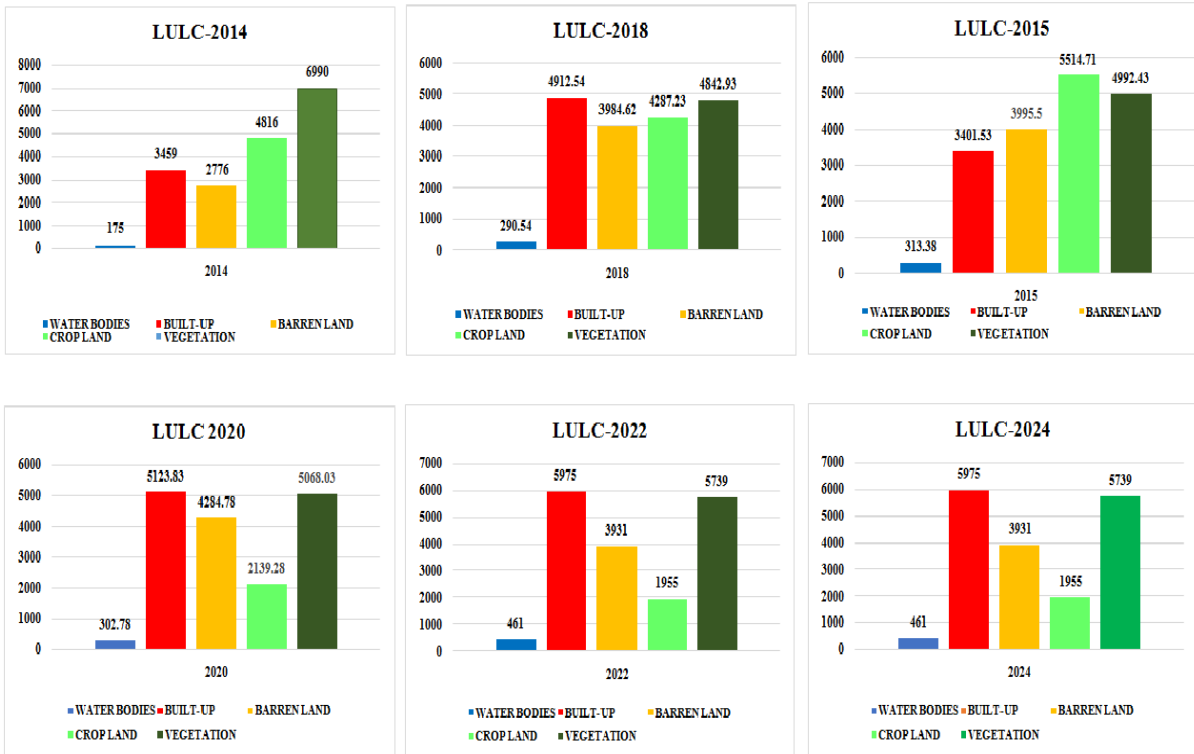
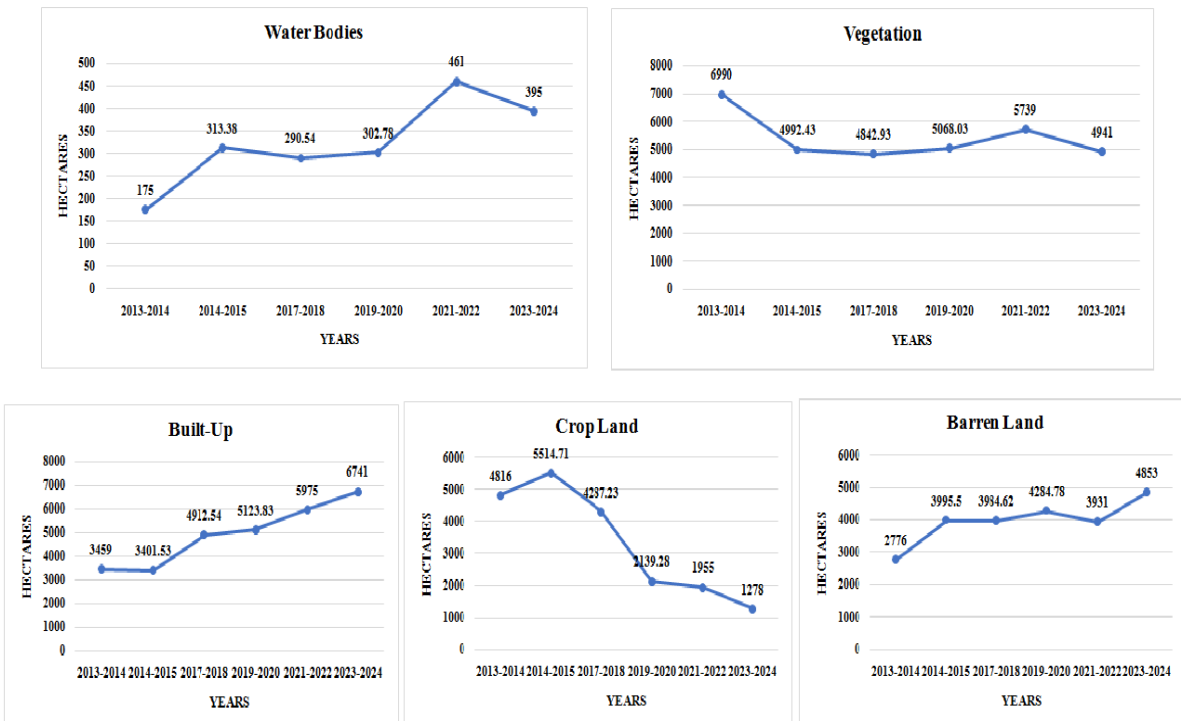


Figure 2: LULC of Amaravathi for various Years from 2014-2024

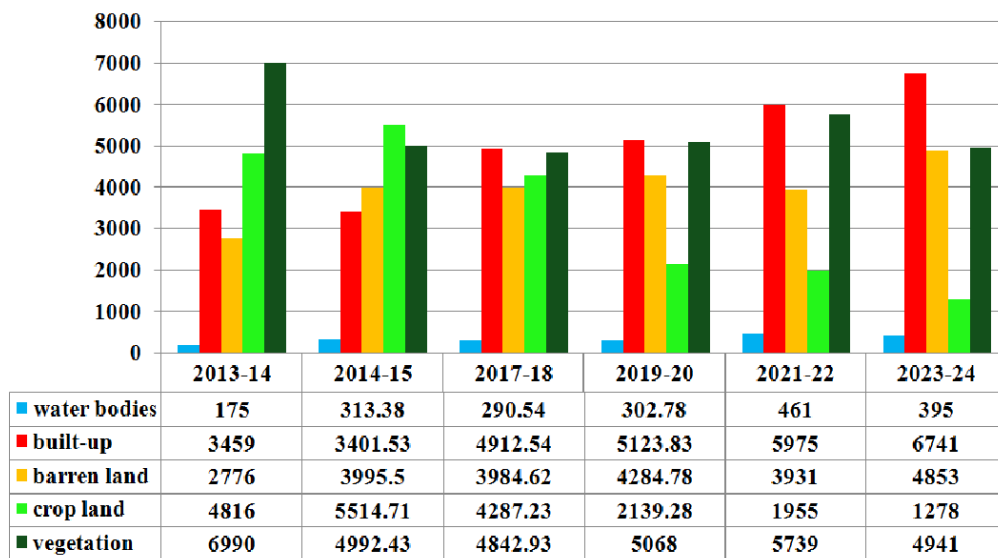


Graph 1: LULC of Amaravathi for various Years from 2014-2024



Graph 2: LULC of Amaravathi for various Years from 2014-2024

LULC OF AMARAVATHI.A.P (2014-2024)



Graph 3: LULC of Amaravathi for various Years from 2013-2024

6. CONCLUSIONS

1. The project, "Land Use/Land Cover Change Detection and Analysis in Amaravati using Google Earth Engine," focuses on monitoring and evaluating how land use and land cover have transformed over time in the Amaravati region. By leveraging Google Earth Engine's powerful processing capabilities, the project analyzes large satellite datasets to detect significant changes in vegetation, urban areas, water bodies, and other land cover types.
2. In 2013-2014, the area had a 175 hectares of Water bodies, 3459 hectares of built-up, 2776 hectares of barren land, 4816 hectares of crop land and 6990 hectares of vegetation. Overall the vegetation land dominated the landscape back then, while water was relatively limited.
3. In 2014-2015, the area had a 313.38 hectares of water bodies, 3401.53 hectares of built-up, 3995.5 hectares of barren land, 5514.71 hectares of crop land and 4992.43 hectares of vegetation. The data source year on year changes, 79% of water bodies are increased, 1.66% of built-up is decreased, 43.9% of barren land is increased, 14.5% of crop land is increased, 28.6% of vegetation is decreased.
4. In 2017-2018, the area had a 290.54 hectares of water bodies, 4912.54 hectares of built-up, 3984.62 hectares of barren land, 4287.23 hectares of crop land and 4842.93 hectares of vegetation. The data source year on year changes, 7.3% of water bodies are decreased, 44.4% of built-up is increased, 0.27% of barren land is decreased, 22.3% of crop land is decreased, 3% of vegetation is decreased.
5. In 2019-2020, the area had a 302.78 hectares of water bodies, 5123.83 hectares of built-up, 4284.78 hectares of barren land, 2139.28 hectares of crop land and 5068.03% hectares of vegetation. The data source year on year changes, 4.2% of water bodies are increased, 4.3% of built-up is increased, 7.5% of barren land is increased, 50.1% of crop land is decreased, 4.65% of vegetation is increased.
6. In 2021-2022, the area had a 461 hectares of water bodies, 5975 hectares of built-up, 3931 hectares of barren land, 1955 hectares of crop land and 5739 hectares of vegetation. The data source year on year changes, 52.3% of water bodies are increased, 16.6% of built-up is increased, 8.3% of barren land is decreased, 8.6% of crop land is decreased, 13.2% of vegetation is increased.
7. In 2023-2024, the area had a 395 hectares of water bodies, 6741 hectares of built-up, 4853 hectares of barren land, 1278 hectares of crop land and 4941 hectares of vegetation. The data source year on year changes, 14.3% of water bodies are decreased, 12.8% of built-up is increased, 23.5% of barren land is increased, 34.6% of crop land is decreased, 13.9% of vegetation is decreased.
8. In last 2014-2024, the data source year on year changes, 125.71% of water bodies are increased, 94.83% of Built-up area is increased, 74.82% of Barren land is increased, 73.45% of crop land is decreased, 29.32% of vegetation is decreased.

REFERENCES

- [1]. Ang Zhang, Aqil Tariq, Abdul Quddoos, Iram Naz, Rana Waqar Aslam, Elgar Barboza, Sajid Ullah & M Abdullah-Al-Wadud, "Spatio-temporal analysis of urban expansion and land use dynamics using google earth engine and predictive models". Scientific Reports volume 15, Article number: 6993 (2025).
- [2]. Halil Ibrahim Gunduz, Department of Geomatics Engineering, Aksaray University, 68100 Aksaray, Turkey. "Land-Use Land-Cover Dynamics and Future Projections Using GEE, ML, and QGIS-MOLUSCE: A Case Study in Manisa". Submission received: 19 December 2024 / Revised: February 2025 / Accepted: 5 February 2025 / Published: 7 February 2025.
- [3]. S. M. Nazmul Haque & A S M Shanawaz Uddin "Identifying land use land cover change using google earth engine: a case study of Narayanganj district, Bangladesh". Theor Appl Climatol 156, 94 (2025). Published: 10 January 2025, Volume 156, article number.
- [4]. Jagannadham Teja, Radhesyam Vaddi, Kesireddy Lakshmika, Parasa Nirupama, "Monitoring the Water Extraction Changes and Land Surface Temperature" Published in: 2024 2nd International Conference on Self Sustainable Artificial Intelligence Systems (ICSSAS).
- [5]. Kavita Devanand Bathe and Nita Sanjay Patil, "Assessment of land use-land cover dynamics and its future projection through Google Earth Engine, machine learning and QGIS-MOLUSCE: A case study in Jagatsinghpur district, Odisha, India". J Earth Syst Sci 133, 111 (2024), Published: 05 June 2024 Volume 133.
- [6]. Pavan Puligadda, Suneetha Manne and Durga Ramdas Raja, "Land Cover Changes Detection Based on Object-Based Image Classification Using the Google Earth Engine". PEIS 2023. Lecture Notes in Electrical Engineering, vol 1098. Springer, Singapore. First Online: 23 January.
- [7]. Ashok Amgoth, Hari Ponnamma Rani and K. V. Jayakumar, Research Scholar, "Exploring LULC changes in Pakhal Lake area, Telangana, India using QGIS MOLUSCE plugin". Published: 27 February 2023, Volume 31, pages 429-438, (2023).
- [8]. SrinivasaPerumal Padma, Sivakumar Vidhya Lakshmi, Ramaiah Prakash, Sundaresan Srividhya, Aburpa Avanachari Sivakumar, Nagarajan Divyah, Cristian Canales and Erick I Saavedra Flores, "Simulation of Land Use/Land Cover Dynamics Using Google Earth Data and QGIS: A Case Study on Outer Ring Road, Southern India". Submission received: 15 November 2022 / Revised: 30 November 2022 / Accepted: 30 November 2022 / Published: 7 December 2022.
- [9]. Diksha Rana, Maya Kumari and Rina Kumari, "Land Use and Land Coverage Analysis with Google Earth Engine and Change Detection in the Sonapat District of the Haryana State in India". (The 9th International Electronic Conference on Sensors and Applications), Published: 1 November 2022.